

# MCL-DESIGNER V3

## INTUITIVE HIGH-PRODUCTIVITY DEVELOPMENT ENVIRONMENT



### FEATURES

#### High-Productivity Development Environment

Quickly create sophisticated, enterprise-ready, mobile workforce, data capture applications with cross-platform portability.

#### Multimodal Applications

Create applications that combine technologies such as barcode scanners, touch screens, keyboards, signature capture, imagers, radio frequency identification, displays, printers, and voice recognition in one application.

#### Cross-Platform Compatibility

Import, convert, upgrade, and enhance your MCL applications across a broad range of devices and operating systems.

### Sophisticated Mobile Applications

MCL-Designer is a high-productivity development environment for creating powerful mobile worker, data management applications with easy cross-platform portability and forward migration.

- Accelerate development time
- Accelerate time to market
- Accelerate return on investment
- Future-proof your applications

MCL-Designer creates intelligent, multimodal applications that run on mobile computers. These applications take advantage of the latest advances in mobile computing technology — superior operating systems, powerful processors, crisp color displays, extensive memory capacities, voice recognition, radio frequency identification, imaging and wireless communication.

- Control and benefit from the unique features of each mobile computer
- Use whichever inputs/outputs are most efficient

As a component of MCL-Collection, MCL-Designer helps you benefit from MCL-Collection's thick-client architecture.

For example, MCL-Designer can create mobile applications that operate in real-time or batch communications modes; in continuously or casually connected communications states; in wired or wireless communications environments.

Benefit from MCL's deployment flexibility to minimize operating costs while maximizing worker productivity.

### The Power of MCL-Designer

The true power of MCL-Designer comes from the ease with which capabilities such as voice recognition are implemented and integrated. Complex applications are created in a very short time with the extensive use of MCL-Designer's dialogue boxes, radio buttons, drag-and-drop, cut-and-paste, screen viewer, screen copy, screen insert, screen delete features and a library of your own frequently used MCL objects.

MCL-Designer also includes a Simulator with an integrated advanced Debugger tool with line-by-line control of your simulation.



## Processes

Implement complex application logic quickly via MCL-Designer's built-in "processes" to facilitate host access, file manipulation, mathematical computations, communications, and more.

## Thick Client/Server Architecture

Create device resident applications that control and take advantage of all the unique features of each mobile computer.

## Simulator and Advanced Debugger

Simulate your application during development. Debug your application with line-by-line control. MCL-Designer's Simulator, Debugger, and Verifier are unsurpassed in the industry for application development, testing, and on-going maintenance.

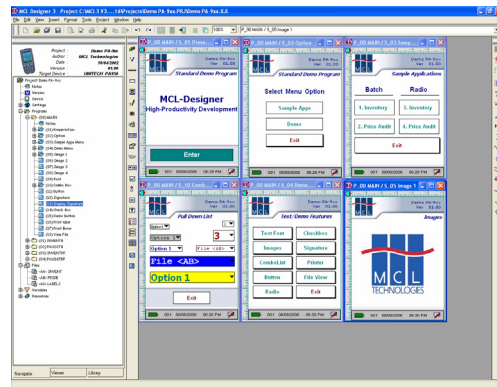
## Communications

Create mobile applications that transition seamlessly back and forth between:

- Real-time communications and batch communications
- Continuously connected and occasionally connected states
- WLAN, WWAN and wired communications environments

The simulator includes the ability to simulate inputs, outputs, host communications and database access. The simulator can also receive real barcode scanner input, send real printer output, perform live host communications, execute live database operations, and so on.

The Simulator, Debugger and a Verifier tool are unsurpassed in the industry for application development, testing, user training and application maintenance.



## MCL-Designer & Voice Recognition

MCL's multimodal approach gives the mobile worker the flexibility to use whichever input method is most convenient and efficient at the moment. Keyboard entry or voice entry of a Code-128 case number, or a UPC or EAN item number is not as efficient as barcode scanning the case or item number. However, keyboard entry or voice input of a quantity variable is more efficient than barcode scanning a quantity. Furthermore, if your mobile worker's hands are full of received goods, a keyboard input may not be as convenient as voice input.

Using MCL-Designer Add-on with MCL-Voice you can easily voice-enable any traditional MCL data collection application with automatic speech recognition, ASR; and voice synthesis text-to-speech, TTS. Voice is simply a new front-end data input/output to your MCL applications.

## Voice recognition brings many benefits to your organization:

- Increases mobile worker efficiency and productivity
- Allows hands-free operation so mobile workers can focus on other activities, such as moving goods
- Allows eyes-free operation so mobile workers can focus on other activities, such as driving a forklift or stocking products

## MCL's unique multimodal implementation of voice brings your organization additional benefits:

- All data capture methods are handled as complementary technologies
- Customers do not have to choose voice over other data capture technologies
- Mobile workers use whichever data capture method is most efficient and convenient to perform the task at hand
- Work flow can be directed by the host application or by mobile workers

### MCL-DESIGNER MINIMUM REQUIREMENTS

Specification	Requirement (min/recommend)
Operating System	Windows XP Windows 2000 Windows 98
Processor Speed (Mhz)	233/300 133 or higher 486XD 66MHZ
RAM (MB)	64/128 64 16/24
Free Hard Disk Space (MB)	80 80 80
Display	800/600 VGA or higher VGA or higher

Copyright © 2008 MCL Technologies. All Rights Reserved

Microsoft, Windows, Windows XP, Windows 2000, and Windows 98 are trademarks or registered trademarks of Microsoft Corporation in the United States and/or other countries.

All other trademarks are the property of their respective owners. All specifications, terms and descriptions of products and services are subject to change without notice or recourse.

## MCL Technologies

Chaussée de Bruxelles 572

1410 Waterloo • Belgium

Tel.: + 32 2 724 35 00

Fax: + 32 2 724 35 04

<http://www.mcl-collection.com>



[Marketing@mcl-collection.com](mailto:Marketing@mcl-collection.com)

[Support@mcl-collection.com](mailto:Support@mcl-collection.com)

[Competence.USA@mcl-collection.com](mailto:Competence.USA@mcl-collection.com)

[Competence.UK@mcl-collection.com](mailto:Competence.UK@mcl-collection.com)

[Competence.NL@mcl-collection.com](mailto:Competence.NL@mcl-collection.com)

# Legacy Technology Services

**We Rent & Sell All Types Of Barcode Equipment**

Call now to talk to an expert

**866-271-9891**

[www.LegacyGlobal.com](http://www.LegacyGlobal.com)

Some brands we carry



MOTOROLA

**Intermec**

**DATALOGIC**™

**Honeywell**

**EQUINOX**  
PAYMENTS



## About us

- Legacy Technology Services is a leading nationwide provider of mobile computing, barcode, printers and point of sale equipment and services.
- For over a decade, thousands of clients across North America have trusted us to provide equipment from leading manufacturers backed by the services to support them.

## Latest Hardware from top manufacturers

- Legacy handles virtually every major manufacturer of mobile computing, barcoding and point of sale equipment.

## Expert Repair and Maintenance services

- Legacy is one of the best repair facilities in North America

## Discontinued product sourcing

- They don't make it anymore? Our inventory also includes manufacturer close-outs and discontinued equipment to support our clients legacy infrastructure.

## Trade-in and Disposal services

- That old equipment laying around your facility may still have some value. Legacy routinely purchases equipment from our clients around the globe.
  - Data destruction
  - Hardware disposal
  - Auditing services

## Dedicated client account team

- Dedicated, highly trained account managers are here to answer all your questions and provide top notch service.

## Equipment rental services

- Sometimes renting is a better solution, Legacy's huge rental inventory provides the equipment you need for temporary needs and projects.



[Legacy, Inc.](http://Legacy, Inc.)

160 West Road,  
Ellington, CT 06029

Toll Free: 866-271-9891

Fax: 888-522-4684